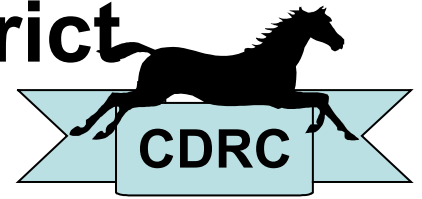
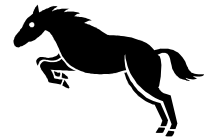


Chobham & District Riding Club



March 2011

NEWSLETTER



STOP PRESS...FLATWORK TRAINING WITH MALCOLM HUNT 27TH MARCH...CONTACT LIANE DEACON

Dear Members,

I am very pleased at the size of membership so early in the year.

We currently have 70 members, and traditionally we see new people joining as the jumping season begins. Around 20% of our members are Juniors and we are considering special activities that they might like to participate in. If you have any thoughts, contact committee member Sarah Leno.

Happy riding!

With best wishes, James Parker, Chairman



JUMPING TO SUCCESS

The Club organised hugely successful RWHS Round One Dressage and Show-Jumping Qualifiers at Angel Farm, Longcross in January. The occasion presented members with a great opportunity to compete in the sunshine after a long Winter.

A number of members won their way through to the Second Round at Berkshire College of Agriculture held in February, competing against the best of Area 6 to qualify for Windsor.

Congratulations and good luck to 15 year old Scarlet Prentice who carries the CDRC flag aloft when she jumps Sambuka at Windsor in May.

The photo shows Junior member Michael Catton on Emma's Glory who was fourth in the First Round at Angel Farm and fifth in the Second Round.





March 2011

DOG ATTACKS – James Parker

Local riders have been concerned about the number of out of control dogs they encounter on in particular Chobham and Horsell commons. Often the dogs will run up behind horses, causing them to shy in fright, while their hapless owner's calls to come to heel go unheeded.

Sometimes it is worse than this. Earlier this year there was a frightful incident where a dog attacked a horse on Chobham Common, and the rider fell off and suffered very serious injury. Since then one of our members has also endured an attack on her horse while out on Horsell Common and was disbelieving of the lack of concern shown by the dog's owner.

Regrettably these incidents are not isolated and neither are they simply a local problem. Last year the British Horse Society (BHS) joined forces with the RSPCA and 20 leading animal charities, law enforcement agencies and trade unions to fight for tougher dog laws. The groups have demanded the main political parties crack down on irresponsible dog ownership and update current "inadequate" legislation.

BHS director of welfare and safety Mark Weston said: "We support the RSPCA's attempts for legislation to make it an offence to allow a dog to be aggressive or use it to cause harassment to a protected animal — the definition of which includes a horse."

Since the BHS launched a new website last year, www.horseaccidents.org.uk the number of incidents reported have increased by over 230%.

Meanwhile, members of the CDRC Committee have met with Diane Beach of Chobham Common Riders Association and Paul Rimmer, Estates Manager for Horsell Common Preservation Society (HCPS) to consider local action.

With a portfolio that includes not only Horsell but also Woodham, Littlewick and Pyrford commons, there are literally thousands of dogs a week using the HCPS estate. Horsell Common alone has 500 vehicles a day using its two main car parks, and the area of focus for dogs is around the celebrated sandpits, as featured in HG Wells 'War of the Worlds'.

Mr Rimmer is not only concerned about the conflict between dogs and horses, he is also alarmed at the amount of mess the dogs create. Later this year the Preservation Society will consult on banning commercial dog walkers from using the car parks on the Commons. Sometimes up to a dozen dogs are being walked by one person. Common sense says this could lead to problems.

It was agreed that notices will be introduced at car parks alerting dog walkers to the fact that they may encounter horse riders and that they should take steps to keep their dogs under control. In addition, notices will be fixed to tell people how they report a dog attack – to the Police and the Council's Dog Warden.

Riders too have their part to play. Sad to say, there have been reports of riders behaving irresponsibly towards dog walkers, and the CDRC, CCRA and HCPS have agreed to work together on establishing and promoting a 'Code of Conduct' for both dog walkers and riders.



March 2011

ORIENTEERING ON HORSEBACK – SUNDAY 17TH APRIL 2011

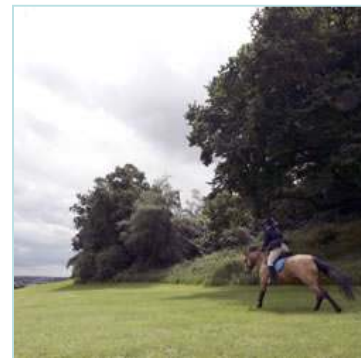
Our first Orienteering outing of the year will take us around Stanners Hill and Chobham Common, and the Club is grateful to Diane Beach for hosting our event at Berwin Park, Chobham, Surrey, GU24 8JJ (next to Fair Oaks Aerodrome).

The entry fee is £7.00 for members and £10 for non-members. There will be a long course (approx 2 hours) and a short course (approx 1 hour). Teams of 2 or 3 are advised and if you need to join a team we will endeavour to assist. Your details will be registered for the event by completing the slip below and returning it with the fee to James.

We plan to set off from 10.00am and James will be in touch with you after entries close on 15th April.

ORIENTEERING – SUNDAY 17th April 2011

I/We would like to take part in this event



NAMES _____

Contact Telephone Number _____

I enclose a cheque payable to C.D.R.C. for £ _____ (Members £7.00
Non-Members £10.00)

Entries Close - 15th April 2011

Please send entries to: JAMES PARKER, OVERDALE, SOUTH CLOSE, WOKING,
SURREY GU21 4TB



CDRC



March 2011

BERWIN PARK CROSS-COUNTRY COURSE FOR HIRE

A course of 2'3" and 2'9" fences present a great opportunity for schooling horse and rider.

Cost £10 per horse. Contact Diane Beach Tel : 01276 858479

Berwin Park, Chobham, Surrey, GU24 8JJ (next to Fairoaks Aerodrome)



VET TALK WITH ANNA

Over 20 members attended a special information evening earlier this month, when veterinary surgeon Anna Hollis from the Scott Dunn Equine Clinic gave the latest information on the conditions of colic and laminitis.

As well as explaining the causes, symptoms and treatments of these ailments, Anna highlighted the importance of careful equine management.

COMMITTEE CONTACT DETAILS:

Claire Valvona	claire.valvona@gmail.com	H = 01483 480339
James Parker	jamesparkerassociates@ymail.com	Mb = 07733 002209
Laura Stevens	laura@higherparkliveries.co.uk	Mb = 07760 772769
Paul Dixon	paul.dixon@flybmi.com	Mb = 07764 225044
Bob & Liane Deacon	hythepark2@ntlworld.com	Mb = 07963 731912
Sally Watson		H = 01932 346765
Sarah Leno	dkruczek@aol.com	H = 01483 487759
Gerri Summers	higherparkschool@yahoo.co.uk	